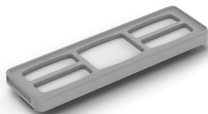


# Packing List

For ref. MS10:



**Front Filters for MSE** ..... 1 set  
*(Each set includes 5 filters)*

**Manual** ..... 1 unit  
Ref. 0034152

0034152-200624

MS10 filters are used with MSE-B.



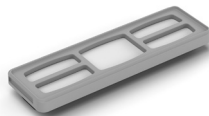
**MS10**  
Front Filter

**MSE**  
Electric Desoldering  
Module

# JBC

www.jbctools.com

## INSTRUCTION MANUAL



### MS10

#### Front Filters for MSE

*Top side*



*Bottom side*

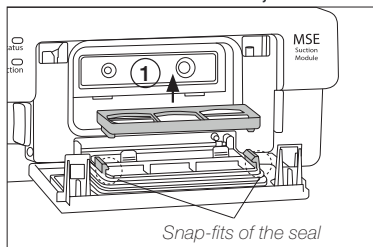


www.jbctools.com

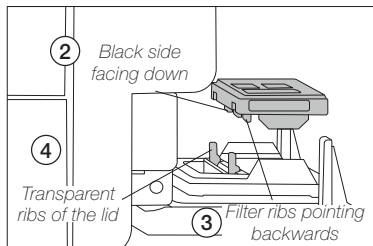


# Replacement

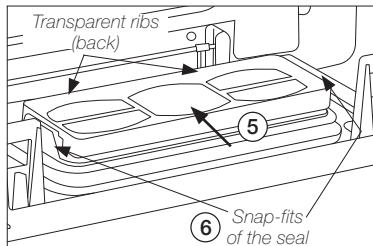
Open the front lid of MSE by sliding down the side tabs. Remove the worn filter by pulling it upwards (1) out of the snap-fits of the seal.



Position the new filter so that the black side is facing down (2) and the ribs at its long side are pointing backwards (3), towards the transparent ribs of the lid (4).



With the filter positioned flat between the snap-fits, push it back (5) until it stops against the transparent ribs.



Make sure that the snap-fits of the seal are slot into the lateral recesses (6) of the filter frame. Close the lid by pressing against both upper corners until it clicks.