

JBC

www.jbctools.com

INSTRUCTION MANUAL



Protectors, Tripods & Extractors

Packing List

Protectors / Tripods /

Extractors 1 unit*

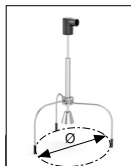
(*according purchased reference)

Manual 1 unit

One of the following items are included, according to purchased reference:



Protectors				Protectors			
incl. in ESHT* (No.)	Ref.	AxB (mm)	AxB (in)	incl. in ESHT* (No.)	Ref.	AxB (mm)	AxB (in)
	P3353	4,3 x 3	0.16 x 0.12		P1249	12 x 23	0.47 x 0.9
	P3786	5,2 x 5,2	0.20 x 0.20	● (44)	P4000	12,5 x 12,5	0.49 x 0.49
	P3352	5,2 x 7,5	0.20 x 0.29		P3354	13,2 x 13,2	0.52 x 0.52
	P3355	5,2 x 9,5	0.20 x 0.37		P4025	13,5 x 21,5	0.53 x 0.85
	P3356	6,2 x 4,2	0.24 x 0.16	● (48)	P2230	15 x 15	0.59 x 0.59
	P3785	7,2 x 7,2	0.28 x 0.28	● (60)	P4010	17 x 17	0.67 x 0.67
	P3784	8,2 x 8,2	0.32 x 0.32		P4005	18 x 29	0.71 x 1.14
	P4035	9 x 13	0.35 x 0.51		P4030	18,5 x 18,5	0.73 x 0.73
	P4040	9,5 x 19	0.7 x 0.74		P1068	18,5 x 24	0.73 x 0.94
	P4080	9,5 x 21	9.5 x 0.83		P2685	28,5 x 28,5	1.12 x 1.12
● (32)	P2220	10 x 10	0.39 x 0.39		P4085	31,5 x 31,5	1.24 x 1.24
	P4045	10,5 x 21	0.14 x 0.82		P2672	33 x 46	1.30 x 1.18
	P4090	11 x 16	0.43 x 0.63		P4002	50 x 50	1.97 x 1.97
● (24)	P2235	12 x 17	0.47 x 0.67		P3357	52,5 x 14	2.06 x 0.55



Tripods			
incl. in ESHT* (No.)	Ref.	øC (mm)	øC (in)
39	T2050	39	1.53
85	T2250	85	3.35



Manual Extractor			
incl. in ESHT* (No.)	Ref.	øD (mm)	øD (in)
	E2190	7	0.27

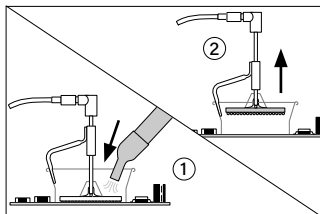
* Corresponding number on ESHT



Extractors

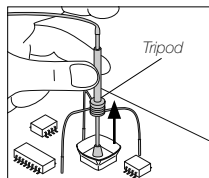
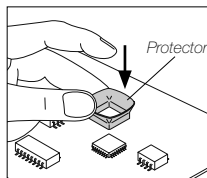
incl. in ESHT* (No.)	Ref.	AxB (mm)	AxB (in)
● (52)	E2052	20 X 20	0.79 x 0.79
● (64)	E2064	20 X 26	0.79 x 1.02
● (80)	E2184	24 X 24	0.94 x 0.94
	E2068	27 X 27	1.06 x 1.06
	E4020	28,5 X 28,5	1.12 x 1.12
	E4015	31,5 X 31,5	1.24 x 1.24
	E2084	33 X 33	1.30 x 1.30
	E2100	38 X 38	1.50 x 1.50
	E2124	45 X 45	1.77 x 1.77

Operation

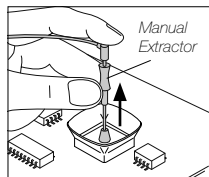
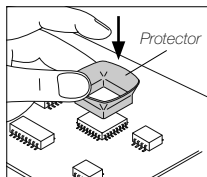


Position the extractor with the appropriate suction cup, press the suction button on the tool and heat up the component (1). The component lifts off automatically when the solder melts (2).

For **small components**
JBC recommends
using the protector +
tripod



For **large components**
JBC recommends
using the manual
extractors



Specifications

Protectors, Tripods & Extractors		Total Package Dimensions (L x W x H):
Extractors	Ref. E2100:	130 x 100 x 98 mm / 5.12 x 3.94 x 3.86 in
	Ref. E2190:	170 x 21 x 21 mm / 6.69 x 0.83 x 0.83 in
	Ref. E2052 / E2064 / E2068 / E2084 / E2124 E2184 / E4015 / E4020:	155 x 85 x 55 mm / 6.10 x 3.35 x 2.17 in
	<hr/>	
Tripods	Ref. T2050:	90 x 55 x 40 mm / 3.54 x 2.17 x 1.57 in
	Ref. T2250:	116 x 83 x 35 mm / 4.57 x 3.27 x 1.38 in
<hr/>		
Protectors	Ref. P1068 / P2672 / P2685 / P3357 / P4005 P4085:	90 x 55 x 40 mm / 3.54 x 2.17 x 1.57 in
	Ref. P1249 / P1593 / P2220 / P2230 / P2235 P3354 / P3784 / P3785 / P4000 / P4010 P4025 / P4030 / P4035 / P4040 / P4045 P4080 / P4090:	80 x 40 X 35 mm / 3.15 x 1.57 x 1.38 in
	Ref. P3352 / P3353 / P3355 / P3356 / P3786:	96 x 55 X 46 mm / 3.78 x 2.17 x 1.81 in
	Ref. P4002:	110 x 80 x 40 mm / 4.33 x 3.15 x 1.57 in
	<hr/>	
	Complies with CE standards.	

JBC

Warranty

JBC's 2 year warranty covers this equipment against all manufacturing defects, including the replacement of defective parts and labour.

Warranty does not cover product wear or misuse.

In order for the warranty to be valid, equipment must be returned, postage paid, to the dealer where it was purchased.



This product should not be thrown in the garbage.

In accordance with the European directive 2012/19/EU, electronic equipment at the end of its life must be collected and returned to an authorized recycling facility.



www.jbctools.com