

JBC

www.jbctools.com

INSTRUCTION MANUAL



FAE060

Fume Aspiration Duct for
Compact Stations

This manual corresponds to the following reference:

F AE060

Packing List

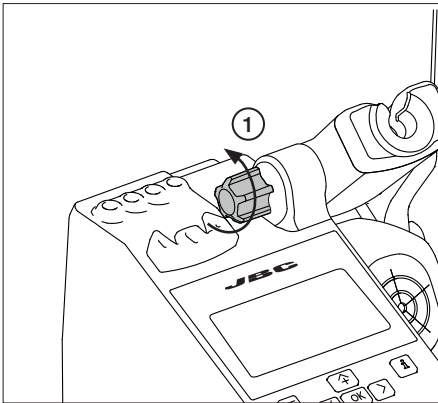
The following items are included:



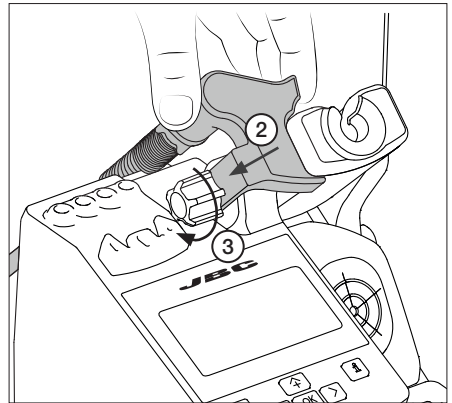
Fume Aspiration Duct for Compact Stations 1 unit
Ref. FAE060

Manual 1 unit
Ref. 0029361

Connection



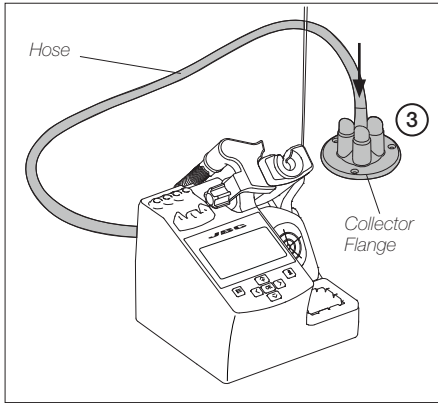
Turn the knob counterclockwise (1) until it loosens.



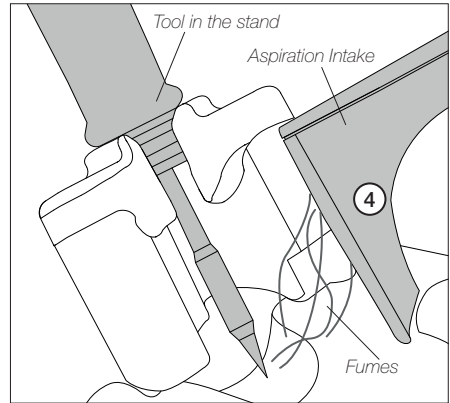
Insert the fume aspiration duct between the knob and the tool holder (2).

To fix the aspiration duct in place tighten the knob (3)

Connection



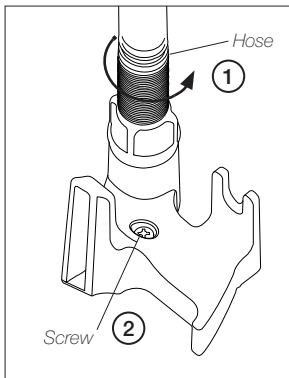
Connect the hose of the fume aspiration duct to the collector flange FAE030 or FAE040 (3). The flanges must be connected to the fume extractor.



The system detects when the tool is returned to the stand and the fume will be automatically absorbed via the aspiration intake (4).

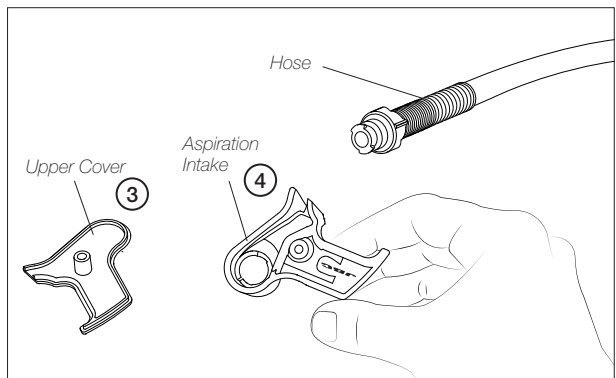
Maintenance

Before carrying out maintenance, always allow the tool to cool down.



First remove the hose by twisting it (1). Shake the hose to get rid of the dirt inside.

Then remove the screw (2).



Dismantle the upper cover (3).

Clean the inside of the aspiration intake (4), if necessary with a cleaning stick.

Assemble all of the components in reverse order.

Specifications

FAE060

Fume Aspiration Duct for Compact Stations

Ref.: **FAE060**

- Length: 107 cm / 42.13 in
- Total Net Weight: 186 g / 0.410 lb

- Total Package Dimensions / Weight: 300 x 130 x 65 mm / 281 g
(L x W x H) 11.81 x 5.12 x 2.56 in / 0.619 lb

Complies with CE standards.
ESD safe.

JBC

Warranty

JBC's 2 year warranty covers this equipment against all manufacturing defects, including the replacement of defective parts and labor.

Warranty does not cover product wear or misuse.

In order for the warranty to be valid, equipment must be returned, postage paid, to the dealer where it was purchased.



This product should not be thrown in the garbage.

In accordance with the European directive 2012/19/EU, electronic equipment at the end of its life must be collected and returned to an authorized recycling facility.



www.jbctools.com