

JBC

www.jbctools.com

INSTRUCTION MANUAL



B1510 / B5050

Grips for B-IRON Handles

This manual corresponds to the following references:

0031510 - green soft foam
0035050 - green soft foam] (See "Compatibility" below)

Packing List

The following items are included:



Grips for B-IRON

Handles 4 units
(according to purchased reference)



Fitters 4 units

Manual 1 unit
Ref. 0031119

Features

B1510 and B5050 grips are made out of soft foam, which ensures excellent manual control of the tool and increased comfort during work.

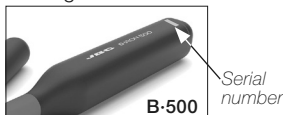
Compatibility

B1510 is compatible with:

- **B-NANO** Nano Handle
- **B-100** Light Handle
- **B-500** Handle, ref. *B500-A* with serial numbers lower than 2881372.

B5050 is compatible with:

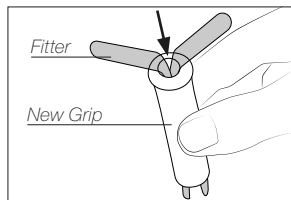
- **B-500** Handle, ref. *B500-B* with serial numbers 2881372 and higher.



Changing Grips

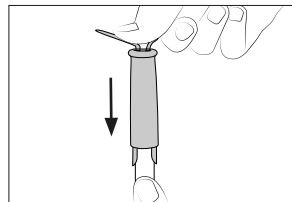
Replace the soft foam grips easily using the included fitters, as shown in the following pictures.

Inserting Fitters



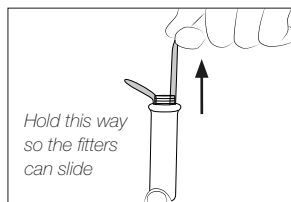
Insert the fitters into the new grip.

Assemble Grip



Push the grip with the fitters onto the handle.

Removing Fitters



To remove the fitters, hold the grip and pull the fitters out. Use pliers if necessary.

Specifications

B1510 / B5050

Grips for B-IRON Handles

Ref.: 0031510 / Ref.: 0035050



- Grip Dimensions:

B1510: 30 x ϕ 12 mm / 1.18 x ϕ 0.47 in

B5050: 30 x ϕ 14 mm / 1.18 x ϕ 0.55 in

- Total Net Weight: 7 g / 0.02 lb

- Package Dimensions/Weight: 90 x 55 x 40 mm / 19 g
(L x W x H) 3.54 x 2.17 x 1.57 in / 0.04 lb

Complies with CE standards.

JBC

Warranty

JBC's 2 year warranty covers this equipment against all manufacturing defects, including the replacement of defective parts and labour.

Warranty does not cover product wear or misuse.

In order for the warranty to be valid, equipment must be returned, postage paid, to the dealer where it was purchased.



This product should not be thrown in the garbage.

In accordance with the European directive 2012/19/EU, electronic equipment at the end of its life must be collected and returned to an authorized recycling facility.



www.jbctools.com