

Packing List



**Brass Wool for
B-IRON Charging-Base** 1 unit



Manual 1 unit
Ref. 0028090

0028090-030724



Brass wool inside



JBC

www.jbctools.com

INSTRUCTION MANUAL



CL0300

**Brass Wool for
B-IRON Charging-Base**

Brass Wool CL0300 is
used with JBC's B-IRON
Charging-Bases.

The brass wool is a very
effective cleaning method.
It leaves a thin layer of
solder on the tip preventing
oxidation between cleaning
and tinning.

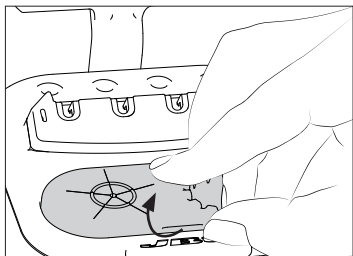


www.jbctools.com

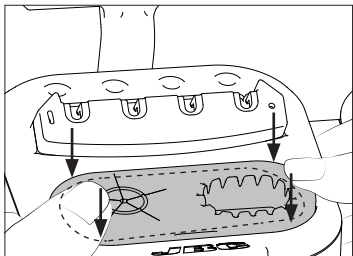
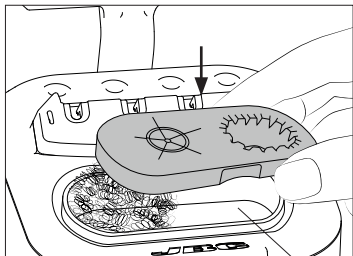


Wool Replacement

Lift the wiper by using the recess on the edge and disassemble it.



Replace the wool for a new one and reassemble the wiper. Make sure that the wiper is correctly inserted all around



Leave space